

Settings

1



FUNC

2



Tilt units

Distance units

Beep

Digital level

Keypad lock

Bluetooth® Smart

Tilt calibration

Favorites

Illumination

Date and Time

Compass adjustment

Touch screen

Offset

Reset

Information

Personalized favorites

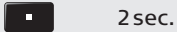
1



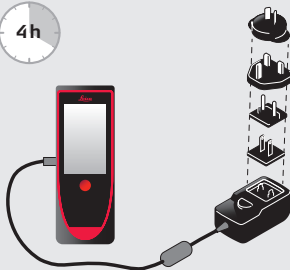
2



3



Charging



Operation

1



ON

2



Measure

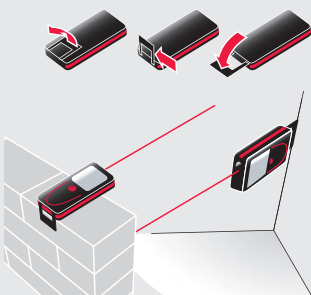
3



2 sec.

OFF

Endpiece



Overview

- 1 Status Bar/Level
- 2 Reference
- 3 Active Function
- 4 Main Line (Result)
- 5 Selection keys linked to the symbol above
- 6 ON/DIST
- 7 Pointfinder (viewscreen)
- 8 Function Screen
- 9 Navigation
- 10 Clear/Off
- 11 Add/Subtract

Unlock keypad

1



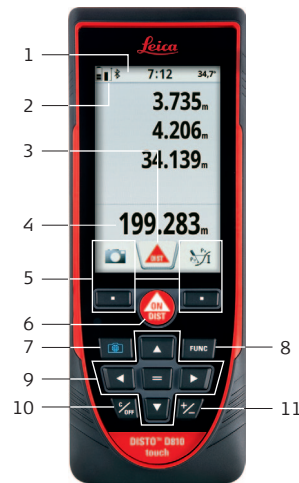
2



Within 2 sec.

Quick Start

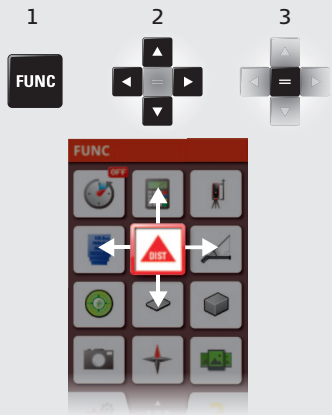
Leica DISTO™ D810 touch



- when it has to be **right**

Leica
Geosystems

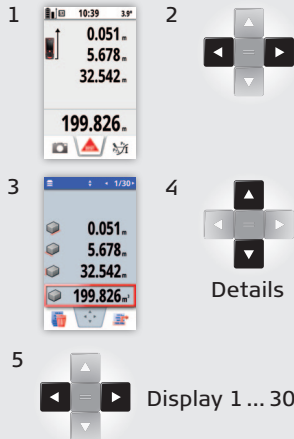
(Navigate) Functions



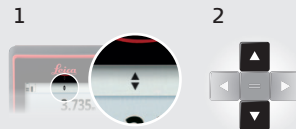
Reference/settings



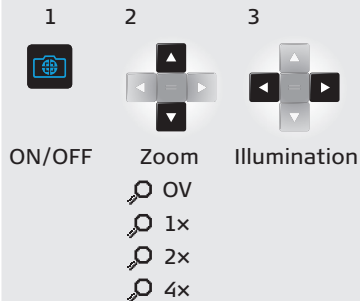
Memory



More results



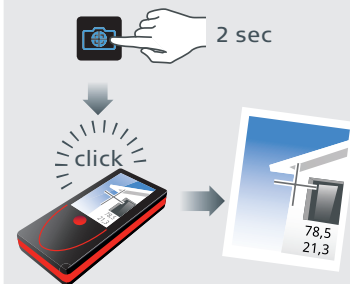
Pointfinder



Take photo



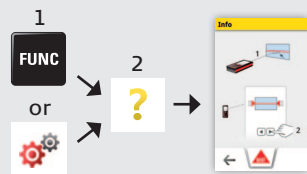
Take screen shot



Laser class 2 in acc. with IEC 60825-1

www.disto.com

? Helpfunctions



SAP. No. 799 095